

# TR-200

Surface Roughness Tester



**TR-200**

SURFACE ROUGHNESS TESTER WITH 13 PARAMETERS

**FEATURES**

- High performance instrument
- Easy to operate menu software
- Graphical display on large LCD
- 13 different roughness parameters
- Pick-up stylus position indicator
- Auto-off after 5 minutes, with auto-store
- Selectable language English, German, French, Italian, Spanish and Dutch
- Data output RS-232 to printer TA-230 or PC
- Advanced software available
- Excellent battery power with Li-ion technology
- Optional pick-up for grooves/bores and holes
- Conform to ISO standard, compatible with DIN, ANSI and JIS standard

## TECHNICAL SPECIFICATIONS

Roughness parameter	Ra, Rz, Ry, Rq, Rt, Rp, Rmax, Rv, R3z, RS, RSm, RSk, Rmr, P
Assessed profiles	Primary profile (P), Roughness profile (R), Tp curve (material ratio Mr)
Profile recording magnification	Vv: 200x ~ 20000x Vh: 20x, 50x, 200x
Standard	Conforms to ISO / DIN / JIS / ANSI (menu selectable)
Measuring system	Metric mm, imperial inch
Display resolution	0.001µm / 0.04 pinch
Display	LCD 128 x 64 dot-matrix, with backlight
Dimensions LCD	50mm x 30mm screen
Display features	Detector stylus position indicator, Battery level indicator, Direct display of parameters and profiles, Direct printing, LCD brightness adjustment, Auto-off after 5 minutes with auto-store, Calibration through software (each cut-off)
Display languages	English, German, French, Italian, Spanish, Dutch
Data output	RS-232; direct to printer TA-230 or PC
Range	Ra, Rq : 0.005µm - 16µm Rz, Ry, Rp, Rt, R3z : 0.02µm - 160µm RSm, RS : 2µm - 4000µm Tp : 1-100% (% Ry)
Pick-up measuring range	±20µm, ±40µm, ±80µm
Cut-off length	0.25mm / 0.8mm / 2.5mm/Auto
Evaluation length Ln	1~5 cut-off (selectable)
Tracing length Lt	(1~5 cut off) + 2 cut-off (selectable)
Digital filter	RC, PC-RC, GAUSS, D-P
Detector	Standard model TS-100, Inductive, Diamond tip radius 5µm, Angle of stylus 90°
Bores from diameter	6.0mm, depth 15mm (TS-100)
Power	Li-ion battery rechargeable
Battery capacity	1000mAh (>3000 measurements)
Charger	220V, 50Hz
Operating temperature	0°C ~ 40°C
Dimensions unit	141mm x 56mm x 48mm
Weight	480gr

## ORDER DETAILS

**TR-200** Surface roughness tester with 13 parameters

## STANDARD DELIVERY

- Instrument
- Pick-up TS-100
- Roughness test plate Ra
- Protection nose
- Steel support for stand alone use
- Charger 220V, 50Hz
- Screwdriver
- Carrying case
- Data cable
- Manual
- INNOVATEST® certificate

## OPTIONAL ACCESSORIES

- Special detectors for grooves/small bores; detector TS-110, detector TS-120
- Extension TSE-A
- Extension TSE-B 90°
- UKAS certified reference standards
- TA-610 test platform
- Steel adapter (ø 8mm)
- Steel adapter for connection to platform TA-610 (L-attachment)
- TA-230 printer
- Dataview software with cable

TS-100/TS-110/TS-120



TSE-A



TSE-B



TA-230 MICRO PRINTER

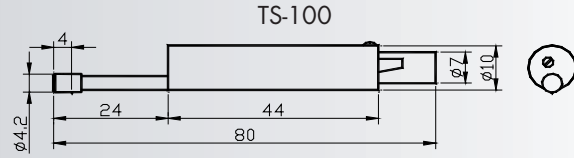


**PICK-UPS**

**TR-200/210/220/300**

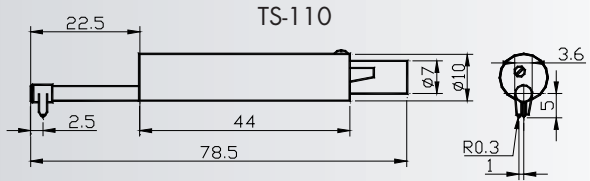
**TS100 standard pick-up**

Standard pick-up. General use. With skid for plane surfaces, Shafts and in bores from Ø5mm. Maximum depth 22mm.



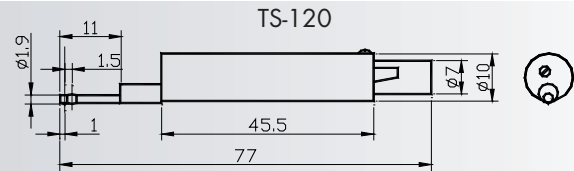
**TS110 for curved surface**

Pick-up with side skid. For measuring on convex and concave surfaces. Minimum curvature radius 3mm. To be used with measuring stand/platform



**TS120 for small holes**

Pick-up with mini skid. for measuring in bores from Ø2mm. maximum bore depth 20mm.



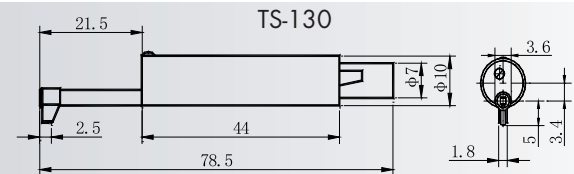
**TS140 right-angled pick-up**

Comprising right-angled pick-up and right-angled transmit rod, used for roughness testing of groove and crank with min. width 7.5~mm20mm and of steps with max. height 2.5mm, working with TA-610/620

TS-140

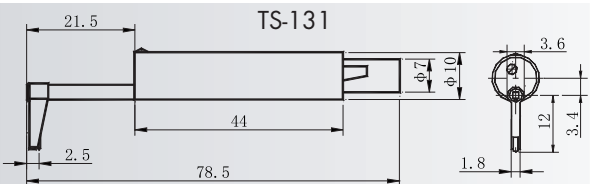
**TS130 for deep groove**

Pick-up for measuring grooves or steps below 3mm. Maximum width 2mm. To be used with measuring stand/platform.



**TS131 for deep groove**

Pick-up for measuring deep grooves or steps below 10mm. Maximum width 2mm. To be used with measuring stand/platform.



**TSE-A extension**

Extension rod for all pick-ups. Length 50mm. Diameter 10mm.

TSE-A



**TSE-B extension 90°**

Extension rod with angle 90°, to create a configuration for finish test on for instance crankshafts. Length 70mm x 25mm, diameter 10mm.

TSE-B



## ACCESSORIES FOR ROUGHNESS TESTERS

TR-200/210/220/300

### MEASURING PLATFORMS

#### TA-610 Measuring platform

Features: Lifting the table through rack and the column can be rotate, it is suitable for testing the workpiece which is not convenient to place for improve accuracy.

Specifications: Surface dimensions: 400×250×70mm  
Y-axial range: 270mm

#### TA-620 Measuring platform

Elevating the table through screw, and V shape groove is available, it is suitable for testing tiny workpiece to improve the accuracy.

Specifications: Dimensions: 400×250×70mm  
Y-axial range: 300mm±1mm

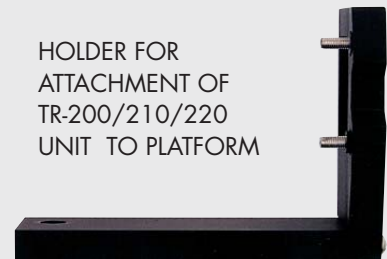
#### TA-650 Measuring platform (for TR-300)

Specifications: Dimensions: 600×420×80  
Total Height: 695mm  
Y-axial range: 300mm±1mm

TA-610  
GRANITE STAND



HOLDER FOR  
ATTACHMENT OF  
TR-200/210/220  
UNIT TO PLATFORM



### MEASURING SUPPORTS

#### TA-630 Micro measuring support

Specifications: X-axial range: ±12.5mm  
Y-axial range: ±12.5mm  
Rotate range: coarse adjustment 360, fine adjustment ±5

#### TA-631 Micro measuring support

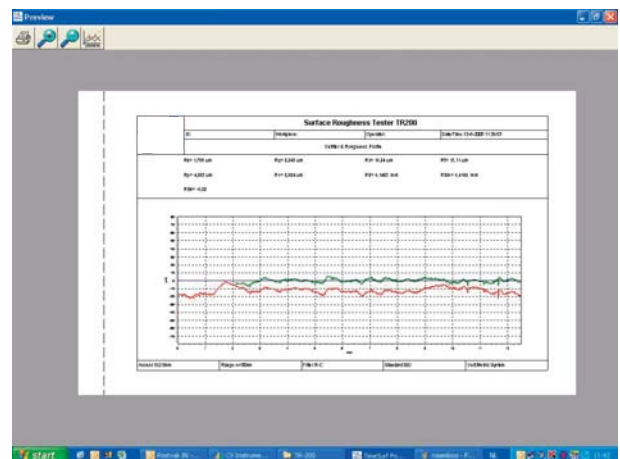
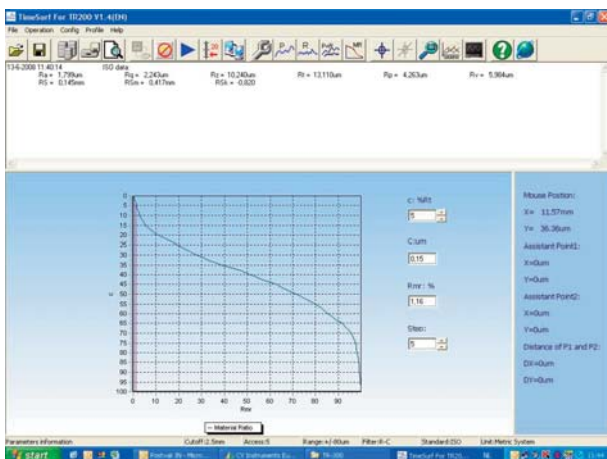
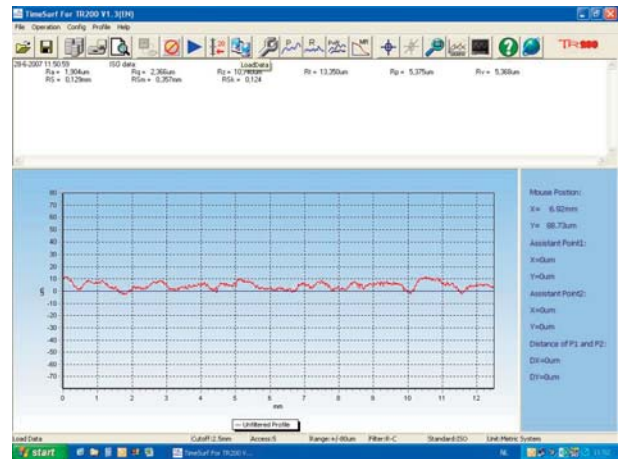
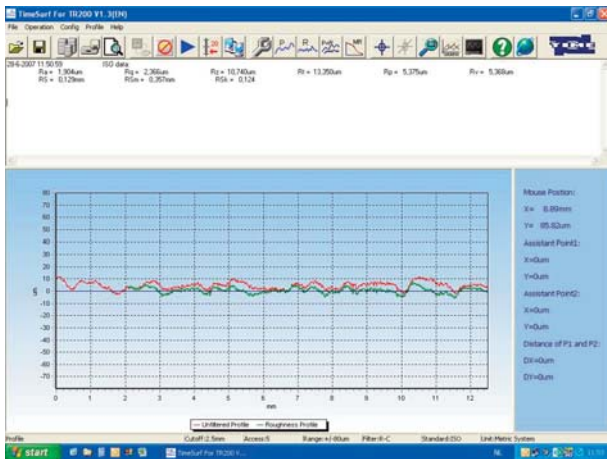
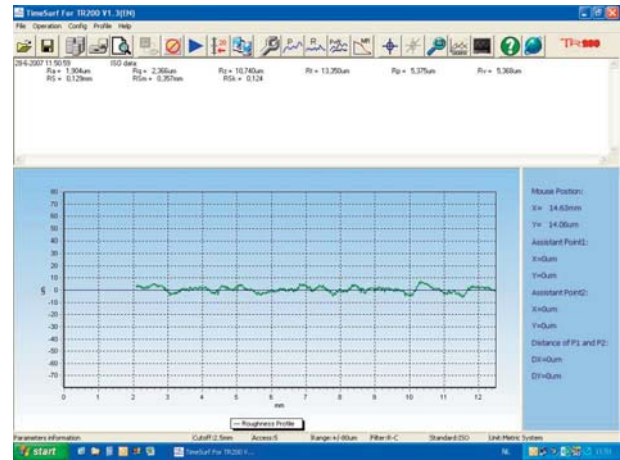
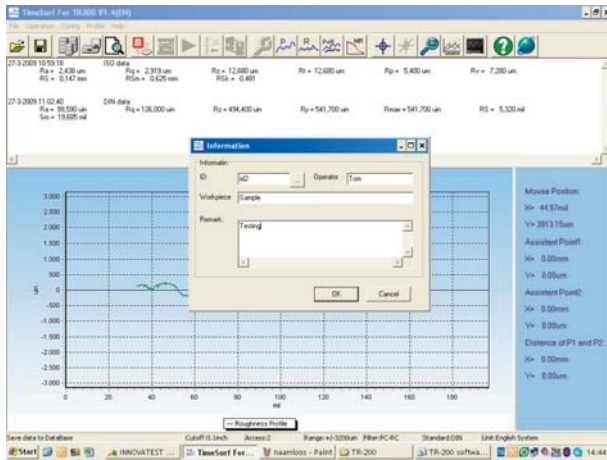
Specifications: X-axial range: ±12.5mm  
Y-axial range: ±12.5mm  
Rotate range: coarse adjustment 360, fine adjustment ±5

TA-630



TA-631





DataView software for TR200/220 works with surface roughness tester TR-200 and TR-220 for managing, analyzing, printing and searching measured data and graphs. This software is designed to complete all the operation without touch any key of TR-200/220. With the software you can see the profile graph more clearly and expediently and store data of many measurement onto your PC.



**TA-230**  
MICRO-PRINTER

**FEATURES**

- Latest model using dot-matrix method, with better reliability and printing quality
- Fast printing and compact size
- Can be used with the following instruments:  
TH-150/TH-152/TH-154, TR-200/TR-210/TR-220/TR-300,  
TT-300/TT-300A, TT-210/TT-220/TT-230, TV-300/TV-310/TV-320

**TECHNICAL SPECIFICATIONS**

Print method	Dot-matrix
Serial interface	RS-232 (19200, 9600, 4800, 2400, 1200, 600, 300, 150BPS selectable)
Parallel interface	ERC-22 / ERC-09
Ribbon life	1000.000 characters / 250.000 characters
Dimensions	170mm x 110mm x 50mm
Weight	350gr

Represented by:

INT10-209 090413

## **CORPORATE HEAD OFFICE**

### **MANUFACTURING, DISTRIBUTION & SERVICE**

#### **INNOVATEST Europe BV**

Borgharenweg 140  
6222 AA Maastricht (The Netherlands)  
Phone: +31 43 3520060  
Fax: +31 43 3631168  
Email: [info@innovatest-europe.com](mailto:info@innovatest-europe.com)

---

#### **INNOVATEST Benelux BVBA**

##### **SALES & SERVICE**

Phone: +32 12 779002  
Fax: +32 12 779003  
E - mail: [info@innovatest-benelux.com](mailto:info@innovatest-benelux.com)

#### **INNOVATEST Shanghai Co., Ltd.**

##### **DISTRIBUTION, SALES & SERVICE**

Building 2, No.123, 1165 Nong Jindu Road,  
South Metropolis Industrial Park  
Minhang District, Shanghai, P.R. China  
Zip code: 201108  
Phone: +86 21 60906200  
Fax: +86 21 60912595  
E - mail: [info@innovatest-shanghai.com](mailto:info@innovatest-shanghai.com)

*Changes in products and/or product specifications can emerge due to new technologies and continuous development. We reserve the right to change or modify specifications of products without prior notice. We recommend you to contact our sales office for up-to-date information.*

© All rights reserved

[www.innovatest-europe.com](http://www.innovatest-europe.com)